



## LLX4003 Switch Indication Light

The LLX4003 Switch Indication Light is a high-quality, economical solution for switch indication. Key features include high-visibility, automatic night time dimming, a rugged aluminum design, and low power consumption (compatible with solar).





## LLX4003 Switch Indication Light

The LLX4003 Switch Indication Light is a high-quality, economical solution for switch indication. Key features include high-visibility, automatic night time dimming, a rugged aluminum design, and low power consumption.



### Available Variations

Any three (3) of the following colors can be accommodated in any desired arrangement at the time of ordering:

- GREEN
- RED
- YELLOW
- WHITE


### Specifications

Weight	15 lbs.
Operating Voltage	12VDC – 15VDC (floating ground)
Operating Current	< 150mA / lamp
Operating Temperature	-40C to 70C
Typical Visual Distance (Day)	> 250 ft.
Typical Visual Distance (Night)	> 250 ft.
Light Diameter	120mm
Unit Dimensions (L x W x H) inches	7.25 x 7 x 18 (Single) 17 x 7 x 18 (Dual)

### Additional Information

- Serves as a direct replacement for the Alstom Hydra-Switch™ indication lights
- Integrates into any automatic switch containing controlled outputs
- Automatic night time dimming with a built-in field testing feature
- Any combination of light colors can be accommodated at order time
- Low power consumption (compatible with solar)



LinearLogiX Corporation		LLX4003 Switch Indication Light	
 WWW.LINEARLOGIX.COM	PUBLICATION DATE	PAGE	REV
	5/5/2015	2 OF 3	006



LinearLogix Corporation

LLX4003 Switch Indication Light



WWW.LINEARLOGIX.COM

PUBLICATION DATE  
5/5/2015

PAGE  
3 OF 3

REV  
006



## LLX4002 Switch Indication Light

The LLX4002 Switch Indication Light is a high-quality, economical solution for switch indication. Key features include high-visibility, automatic night time dimming, a rugged aluminum design, and low power consumption (compatible with solar).

**LLX**  
LINEARLOGIX 



## LLX4002 Switch Indication Light

The LLX4002 Switch Indication Light is a high-quality, economical solution for switch indication. Key features include high-visibility, automatic night time dimming, a rugged aluminum design, and low power consumption.



### Available Variations

Any two (2) of the following colors can be accommodated in any desired arrangement at the time of ordering:

- GREEN
- RED
- YELLOW
- WHITE

### Specifications

Weight	10 lbs.
Operating Voltage	12VDC – 15VDC (floating ground)
Operating Current	< 150mA / lamp
Operating Temperature	-40C to 70C
Typical Visual Distance (Day)	> 250 ft.
Typical Visual Distance (Night)	> 250 ft.
Light Diameter	120mm
Unit Dimensions (L x W x H) inches	7.5 x 5.5 x 11 (Single) 14.5 x 5.5 x 11 (Dual)

### Additional Information

- Serves as a direct replacement for the Alstom Hydra-Switch™ indication lights
- Integrates into any automatic switch containing controlled outputs
- Automatic night time dimming with a built-in field testing feature
- Any combination of light colors can be accommodated at order time
- Low power consumption (compatible with solar)



LinearLogiX Corporation

LLX4002 Switch Indication Light

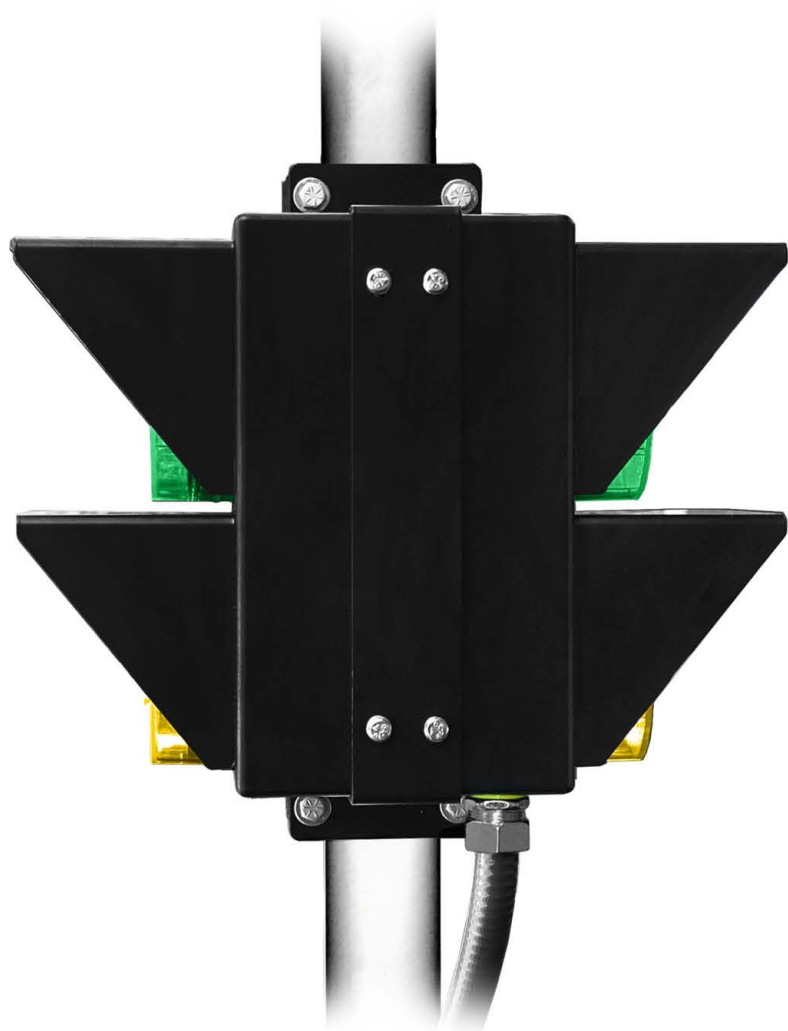


WWW.LINEARLOGIX.COM

PUBLICATION DATE  
8/31/2015

PAGE  
2 OF 3

REV  
003



LinearLogiX Corporation		LLX4002 Switch Indication Light	
WWW.LINEARLOGIX.COM	PUBLICATION DATE	PAGE	REV
	8/31/2015	3 OF 3	003



## LLX4003-LP Switch Indication Light

The LLX4003-LP (Low Profile) Switch Indication Light is a high-quality, economical solution for switch indication. Key features include a low-profile design, width and tilt adjustments, high-visibility, automatic night time dimming, a rugged aluminum design, and low power consumption (compatible with solar).



# LLX4003-LP Switch Indication Light

The LLX4003-LP (Low Profile) Switch Indication Light is a high-quality, economical solution for switch indication. Key features include a low-profile design, width and tilt adjustments, high-visibility, automatic night time dimming, a rugged aluminum design, and low power consumption (compatible with solar).



## Available Variations

Any three (3) of the following colors can be accommodated in any desired arrangement at the time of ordering:

- GREEN
- RED
- YELLOW
- WHITE

## Specifications

Weight	20 lbs.
Operating Voltage	12VDC – 15VDC (floating ground)
Operating Current	< 150 mA / lamp
Operating Temperature	-40C to 70C
Typical Visual Distance (Day)	> 250 ft.
Typical Visual Distance (Night)	> 250 ft.
Light Diameter	120 mm
Unit Dimensions (L x W x H) inches	19.5 x 21.5 – 25 x 7 – 9
Horizontal Width Adjustment	21.5 – 25 inches
Mechanical Tilt Adjustment	0 – 22 degrees

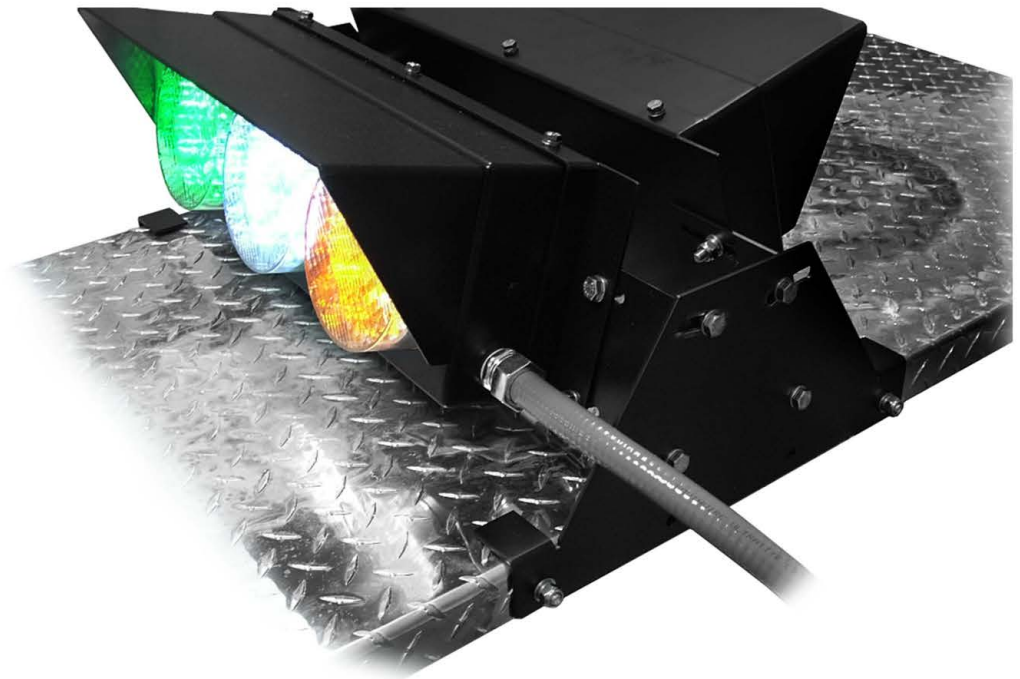
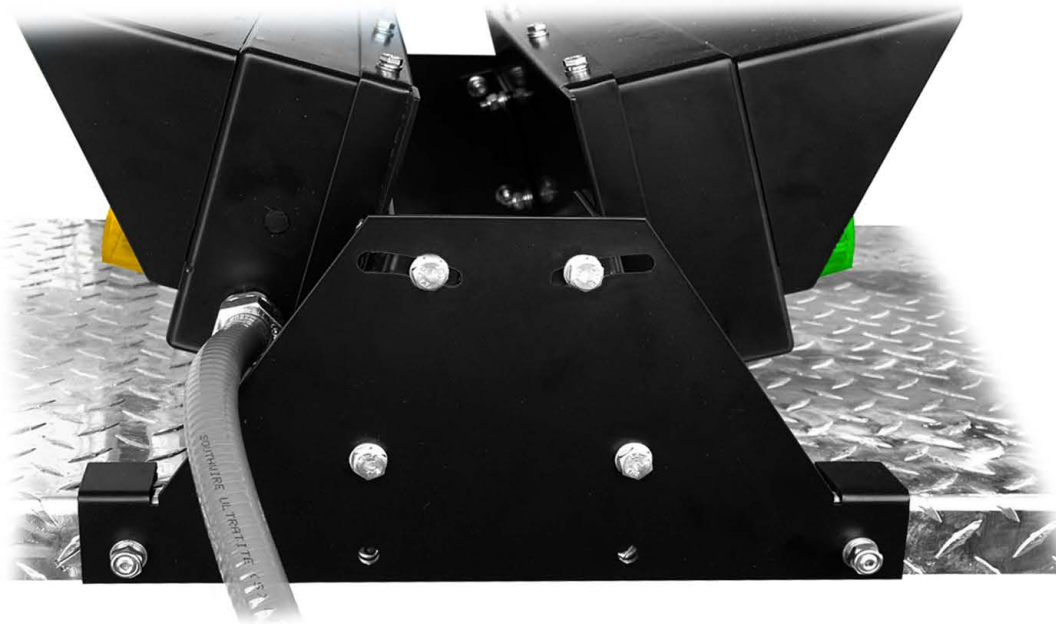
## Additional Information

- Serves as a direct replacement for the Alstom Hydra-Switch™ indication lights
- Integrates into any automatic switch containing controlled outputs
- Automatic night time dimming with a built-in field testing feature
- Any combination of light colors can be accommodated at order time
- Low power consumption (compatible with solar)



LinearLogiX Corporation		LLX400-LP (Low Profile) Switch Indication Light	
WWW.LINEARLOGIX.COM	PUBLICATION DATE	PAGE	REV
	9/21/2015	2 OF 3	003





LinearLogiX Corporation

LLX400-LP (Low Profile) Switch Indication Light



WWW.LINEARLOGIX.COM

PUBLICATION DATE  
9/21/2015

PAGE  
3 OF 3

REV  
003